



European Research Council

Established by the European Commission

Slide of the Seminar

Waves and extreme events: from atmospheric to turbulent flows

Prof. Patricio Clark di Leoni

***ERC Advanced Grant (N. 339032) “NewTURB”
(P.I. Prof. Luca Biferale)***

Università degli Studi di Roma Tor Vergata
C.F.n. 80213750583 – Partita IVA n. 02133971008 - Via della Ricerca Scientifica, 1 – 00133 ROMA

Waves and extreme events: from atmospheric to turbulent flows

P. Clark di Leoni and P. D. Mininni

Group of Astrophysical Flows
Physics Department
University of Buenos Aires

Roma, Italia
July 18th, 2016

What, how, and why?

- ▶ Waves can be present in a turbulent flow. We know they may alter the dynamics if they do.

What, how, and why?

- ▶ Waves can be present in a turbulent flow. We know they may alter the dynamics if they do.
- ▶ Can we “extract” the waves from the flow? Can we understand how they interact with other structures?

What, how, and why?

- ▶ Waves can be present in a turbulent flow. We know they may alter the dynamics if they do.
- ▶ Can we “extract” the waves from the flow? Can we understand how they interact with other structures?
- ▶ Characterization of the effect of waves, and measurements of the amount of energy in wave modes has been done mostly **indirectly**.

What, how, and why?

- ▶ Waves can be present in a turbulent flow. We know they may alter the dynamics if they do.
- ▶ Can we “extract” the waves from the flow? Can we understand how they interact with other structures?
- ▶ Characterization of the effect of waves, and measurements of the amount of energy in wave modes has been done mostly **indirectly**.
- ▶ Space and time resolved spectra (e.g. [*Yarom and Sharom, Nature Phys (2014)*; *Cobelli et al, PRL (2009)*]) can study the effect of waves **directly**

Systems studied

- ▶ Rotating turbulence and stratified turbulence

Systems studied

- ▶ Rotating turbulence and stratified turbulence
 - ▶ Boussinesq model

Systems studied

- ▶ Rotating turbulence and stratified turbulence
 - ▶ Boussinesq model
 - ▶ 3D DNS with pseudospectral code

Systems studied

- ▶ Rotating turbulence and stratified turbulence
 - ▶ Boussinesq model
 - ▶ 3D DNS with pseudospectral code
- ▶ Free surface waves

Systems studied

- ▶ Rotating turbulence and stratified turbulence
 - ▶ Boussinesq model
 - ▶ 3D DNS with pseudospectral code
- ▶ Free surface waves
 - ▶ Gravitocapillary waves in water

Systems studied

- ▶ Rotating turbulence and stratified turbulence
 - ▶ Boussinesq model
 - ▶ 3D DNS with pseudospectral code
- ▶ Free surface waves
 - ▶ Gravitocapillary waves in water
 - ▶ Profilometry technique [*Maurel et al, Appl Opt (2009); Lagubeau et al, Appl Opt (2015)*]

Systems studied

- ▶ Rotating turbulence and stratified turbulence
 - ▶ Boussinesq model
 - ▶ 3D DNS with pseudospectral code
- ▶ Free surface waves
 - ▶ Gravitocapillary waves in water
 - ▶ Profilometry technique [*Maurel et al, Appl Opt (2009); Lagubeau et al, Appl Opt (2015)*]
- ▶ Quantum turbulence

Systems studied

- ▶ Rotating turbulence and stratified turbulence
 - ▶ Boussinesq model
 - ▶ 3D DNS with pseudospectral code
- ▶ Free surface waves
 - ▶ Gravitocapillary waves in water
 - ▶ Profilometry technique [*Maurel et al, Appl Opt (2009)*; *Lagubeau et al, Appl Opt (2015)*]
- ▶ Quantum turbulence
 - ▶ Gross-Pitaevskii equation

Systems studied

- ▶ Rotating turbulence and stratified turbulence
 - ▶ Boussinesq model
 - ▶ 3D DNS with pseudospectral code
- ▶ Free surface waves
 - ▶ Gravitocapillary waves in water
 - ▶ Profilometry technique [*Maurel et al, Appl Opt (2009)*; *Lagubeau et al, Appl Opt (2015)*]
- ▶ Quantum turbulence
 - ▶ Gross-Pitaevskii equation
 - ▶ 3D DNS with pseudospectral code

Rotating turbulence

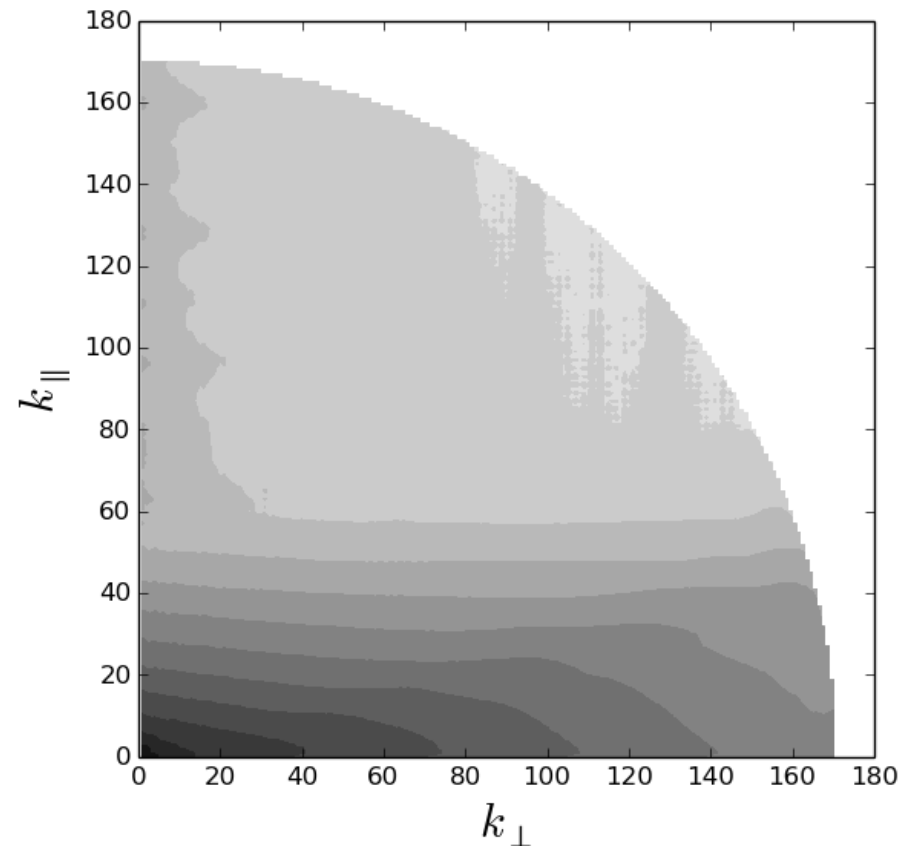
Anisotropization due to the effect of waves

$$\omega_R = \frac{2\Omega k_{\parallel}}{k} \text{ (inertial waves, } k_{\parallel} \text{ is parallel to rotation axis)}$$

Rotating turbulence

Anisotropization due to the effect of waves

$$\omega_R = \frac{2\Omega k_{\parallel}}{k} \quad (\text{inertial waves, } k_{\parallel} \text{ is parallel to rotation axis})$$



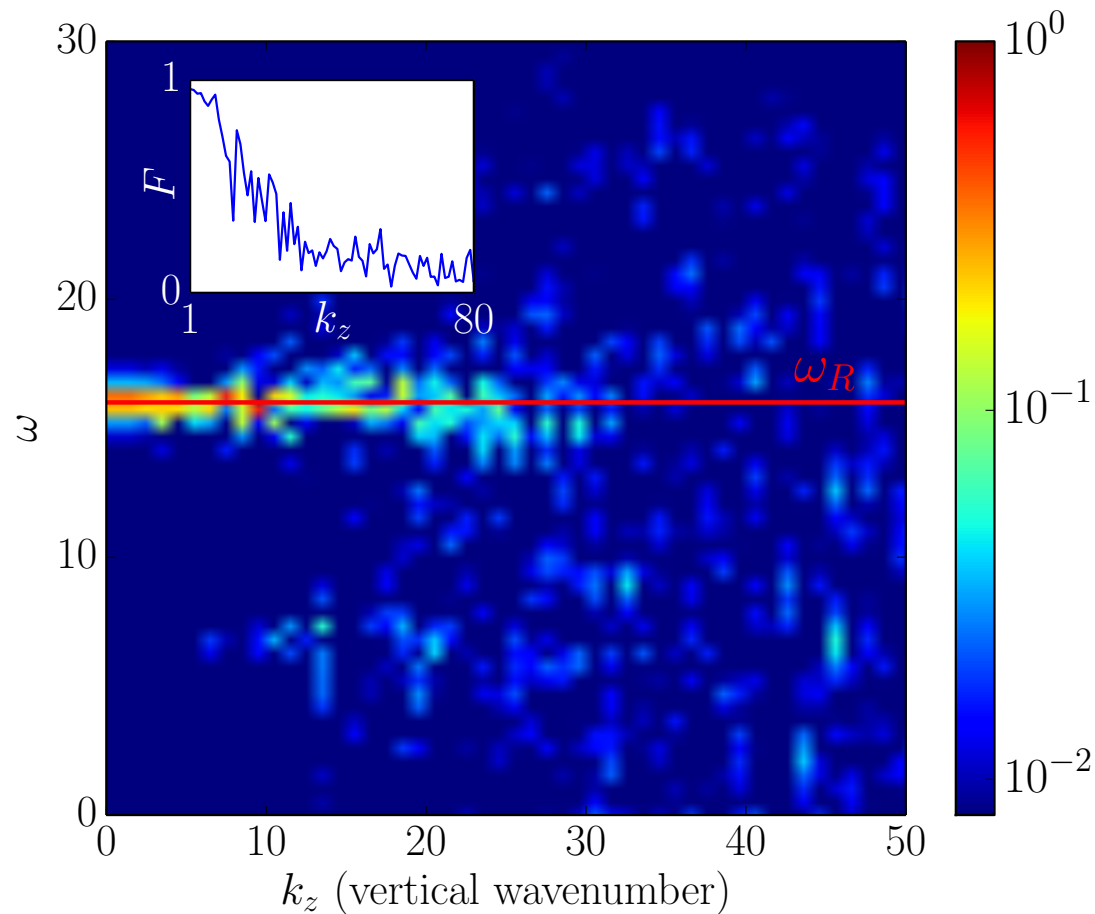
Preferential energy transfer towards modes with small k_{\parallel} (Waleffe, PoF 93). But exactly where are the waves?

[PC et al, PoF (2014)]

Rotating turbulence

$$E(k, \omega)$$

Only in the larger scales energy accumulates along modes satisfying the dispersion relation of inertial waves!



$$\omega_R = \frac{2\Omega k_{\parallel}}{k} \Rightarrow \omega_R(0, 0, k_z) = 2\Omega$$

Stratified flows

Previous works

- ▶ Boussinesq model with no rotation. Buoyancy is now the restitutive force. Gravity acts in the vertical direction.

Stratified flows

Previous works

- ▶ Boussinesq model with no rotation. Buoyancy is now the restitutive force. Gravity acts in the vertical direction.
- ▶ Internal waves: $\omega_S = \frac{Nk_{\perp}}{k}$

Stratified flows

Previous works

- ▶ Boussinesq model with no rotation. Buoyancy is now the restitutive force. Gravity acts in the vertical direction.
- ▶ Internal waves: $\omega_S = \frac{Nk_{\perp}}{k}$
- ▶ Develop vertically sheared horizontal winds [*Smith & Waleffe, JFM (2003)*]

Stratified flows

Previous works

- ▶ Boussinesq model with no rotation. Buoyancy is now the restitutive force. Gravity acts in the vertical direction.
- ▶ Internal waves: $\omega_S = \frac{Nk_{\perp}}{k}$
- ▶ Develop vertically sheared horizontal winds [*Smith & Waleffe, JFM (2003)*]
- ▶ These cause Doppler shifting of internal waves [*Hines, JAS (1991)*]

Stratified flows

Previous works

- ▶ Boussinesq model with no rotation. Buoyancy is now the restitutive force. Gravity acts in the vertical direction.
- ▶ Internal waves: $\omega_S = \frac{Nk_{\perp}}{k}$
- ▶ Develop vertically sheared horizontal winds [*Smith & Waleffe, JFM (2003)*]
- ▶ These cause Doppler shifting of internal waves [*Hines, JAS (1991)*]
- ▶ When the phase velocity of a wave matches that of the horizontal wind Critical Layer absorption occurs [*Hines, JAS (1991); Winters & D'Asaro, JFM (1994)*]

Stratified flows

Previous works

- ▶ Boussinesq model with no rotation. Buoyancy is now the restitutive force. Gravity acts in the vertical direction.
- ▶ Internal waves: $\omega_S = \frac{Nk_{\perp}}{k}$
- ▶ Develop vertically sheared horizontal winds [*Smith & Waleffe, JFM (2003)*]
- ▶ These cause Doppler shifting of internal waves [*Hines, JAS (1991)*]
- ▶ When the phase velocity of a wave matches that of the horizontal wind Critical Layer absorption occurs [*Hines, JAS (1991); Winters & D'Asaro, JFM (1994)*]
- ▶ This has been observed in the atmosphere [*Gossard et al, JGR (1970); Kunze et al, JGR (1990)*]

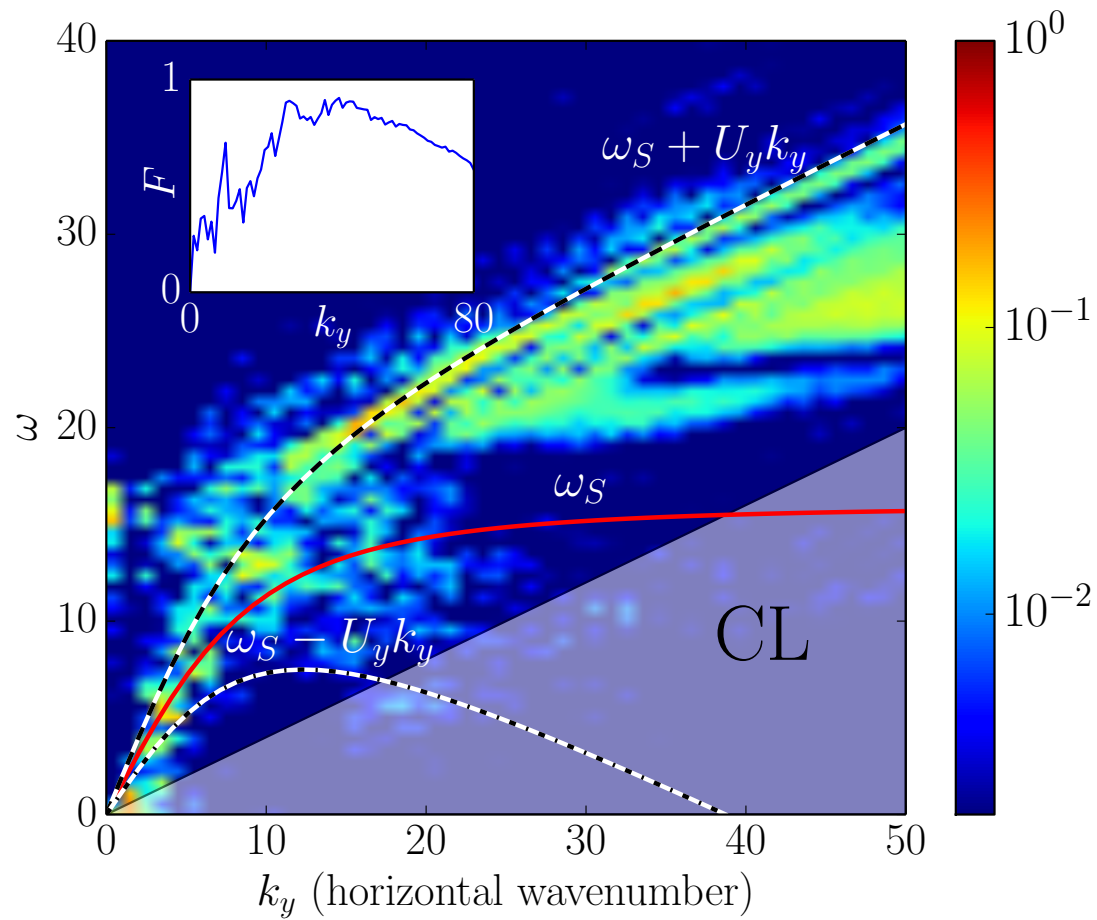
Stratified flows

Previous works

- ▶ Boussinesq model with no rotation. Buoyancy is now the restitutive force. Gravity acts in the vertical direction.
- ▶ Internal waves: $\omega_S = \frac{Nk_{\perp}}{k}$
- ▶ Develop vertically sheared horizontal winds [*Smith & Waleffe, JFM (2003)*]
- ▶ These cause Doppler shifting of internal waves [*Hines, JAS (1991)*]
- ▶ When the phase velocity of a wave matches that of the horizontal wind Critical Layer absorption occurs [*Hines, JAS (1991); Winters & D'Asaro, JFM (1994)*]
- ▶ This has been observed in the atmosphere [*Gossard et al, JGR (1970); Kunze et al, JGR (1990)*]
- ▶ Theories of stratified turbulence don't take this effects into account!

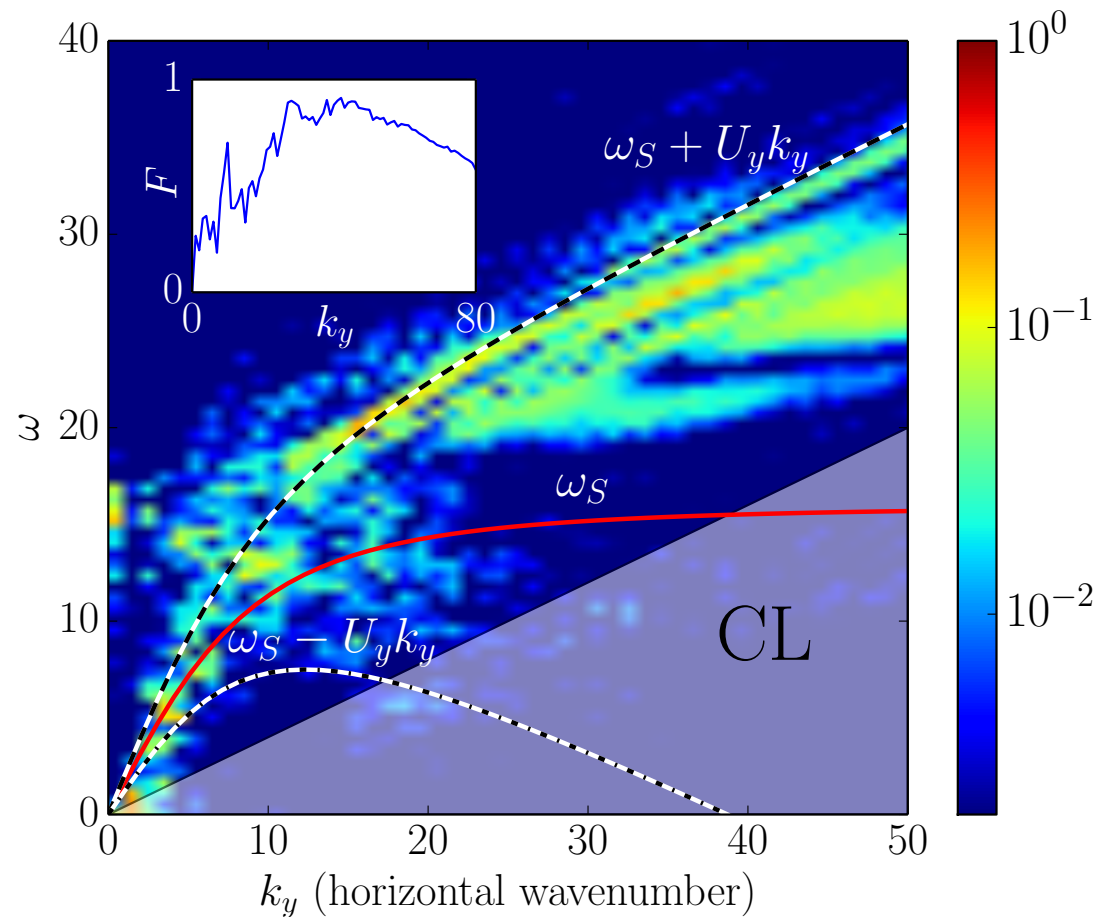
Stratified turbulence

$$E(k, \omega)$$



Stratified turbulence

$$E(k, \omega)$$



Doppler shifting and Critical Layer absorption appear! This indicates a nonlocal transfer of energy from the small to the large scales.

[PC & P. Mininni, *PRE* (2015)]

Free surface waves

Experiment of gravitocapillary waves in water:

$$\omega(k) = \sqrt{\tanh(h_0 k) \left(gk + \frac{\gamma}{\rho h_0} k^3 \right)}$$

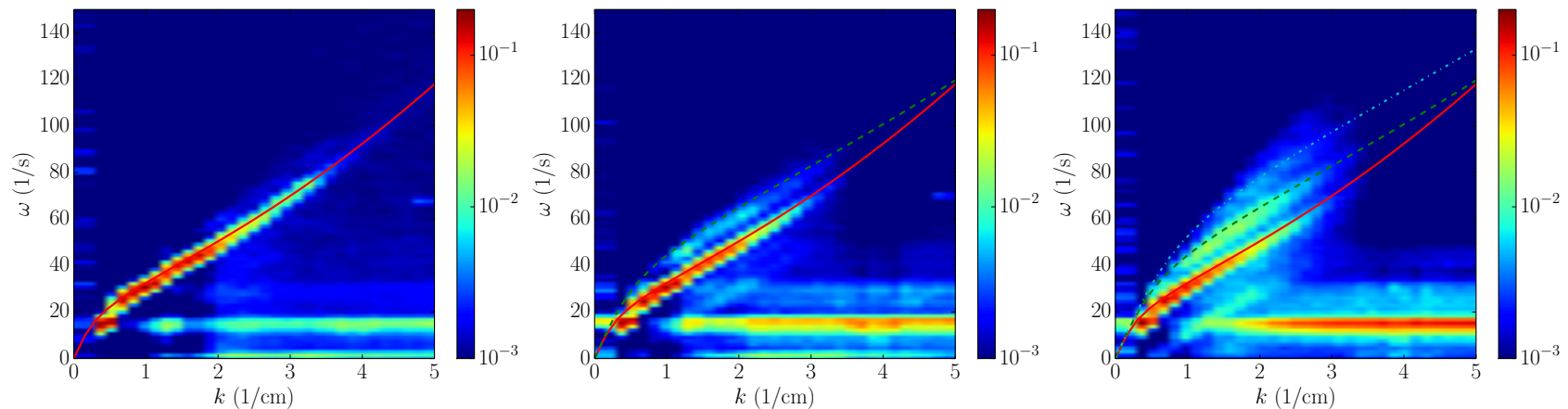
We varied the amplitude of the mechanical forcing

Free surface waves

Experiment of gravitocapillary waves in water:

$$\omega(k) = \sqrt{\tanh(h_0 k) \left(gk + \frac{\gamma}{\rho h_0} k^3 \right)}$$

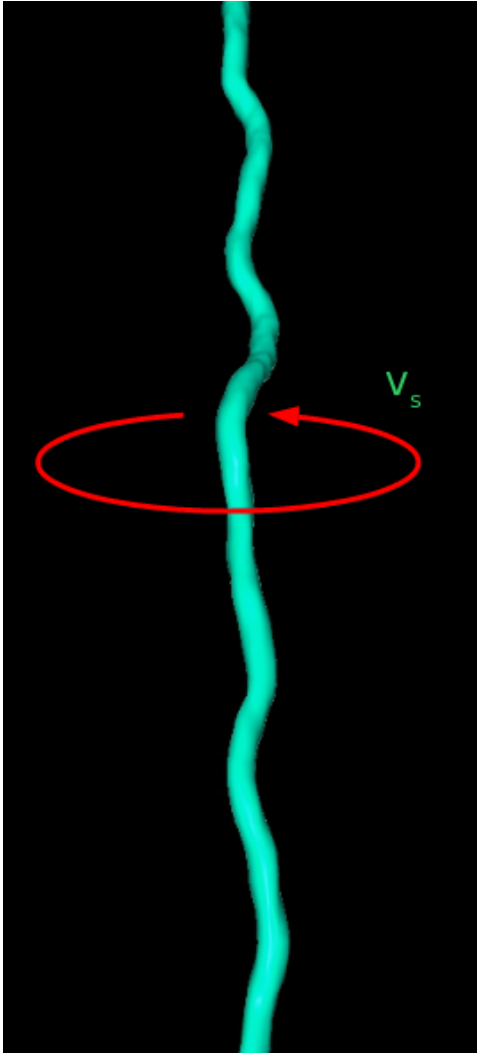
We varied the amplitude of the mechanical forcing



Injecting more energy creates bound waves and increases broadening!
[PC, P. Cobelli & P. Mininni, EPJE (2015)]

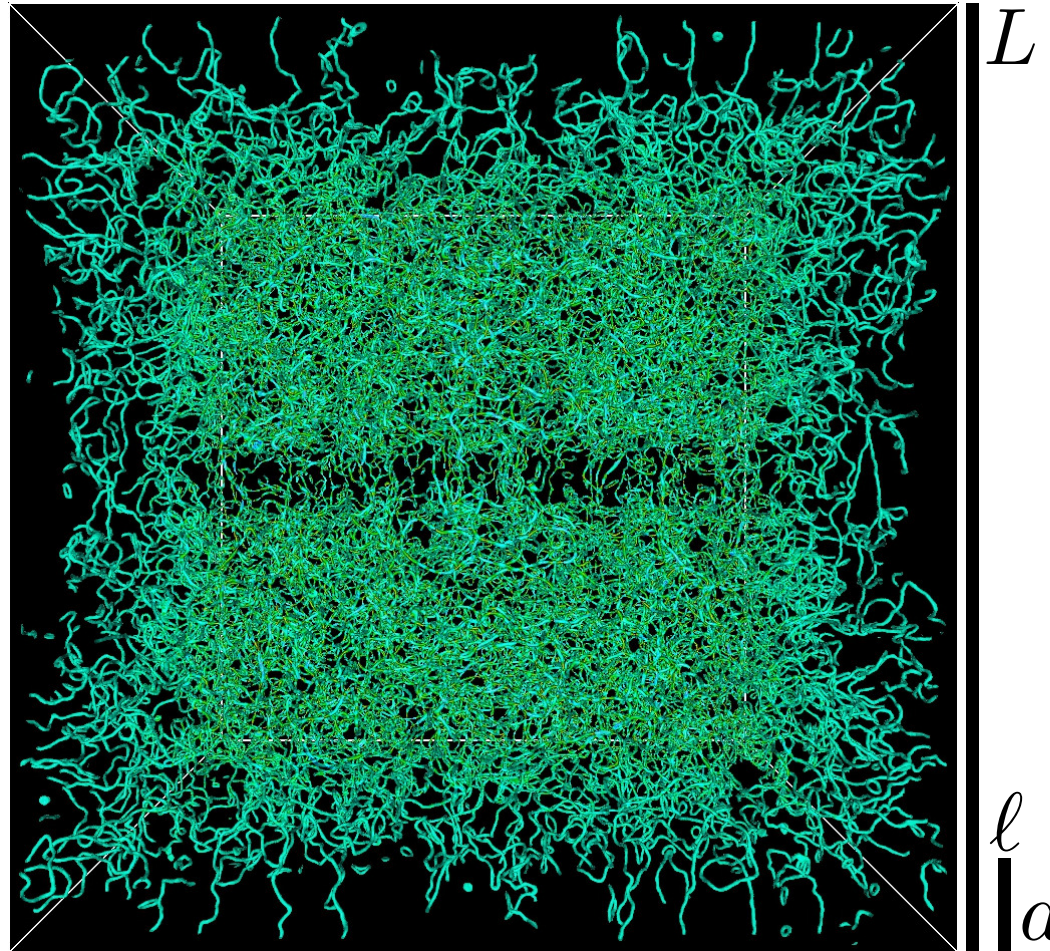
Superfluid turbulence

Gross-Pitaevskii equation



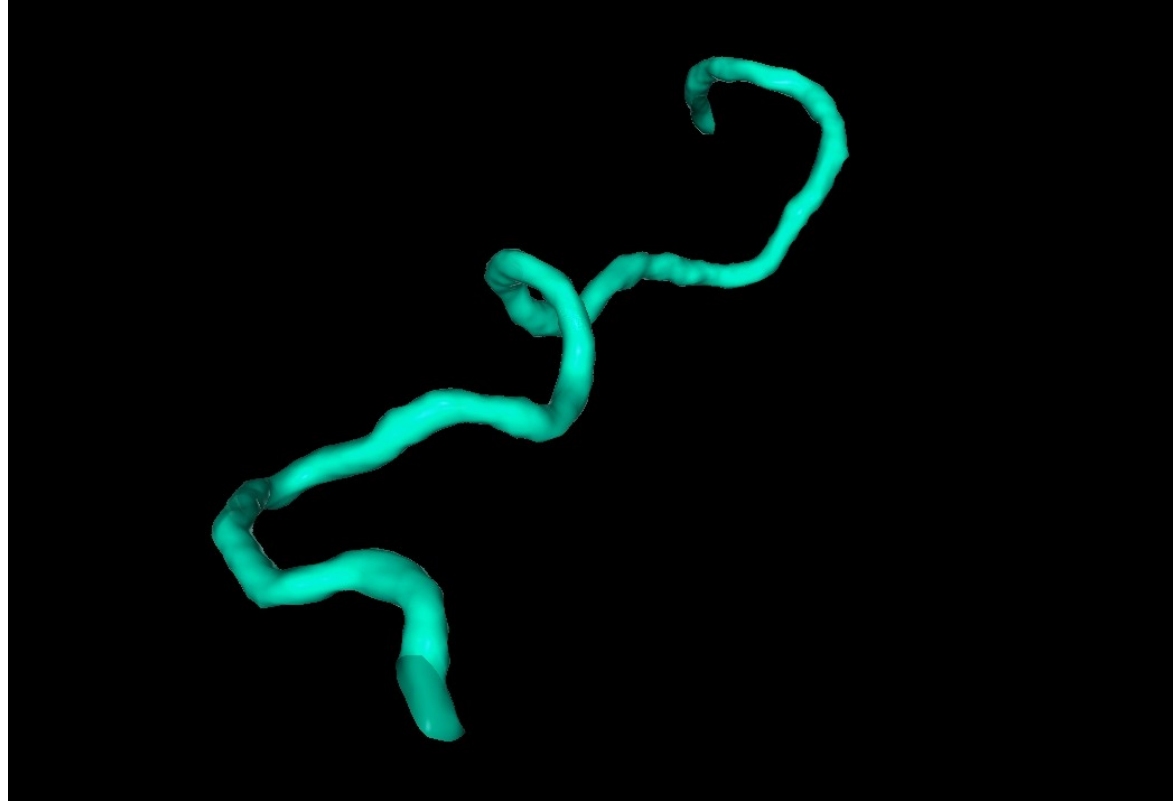
- ▶ Topological line defects
- ▶ Vorticity is quantized and concentrated along these lines
- ▶ Except along these lines, the equations can be transformed to that of an ideal fluid
- ▶ These are “decay” simulations, an initial condition is imposed and we don't have forcing.

Superfluid turbulence (Gross-Pitaevskii equation)



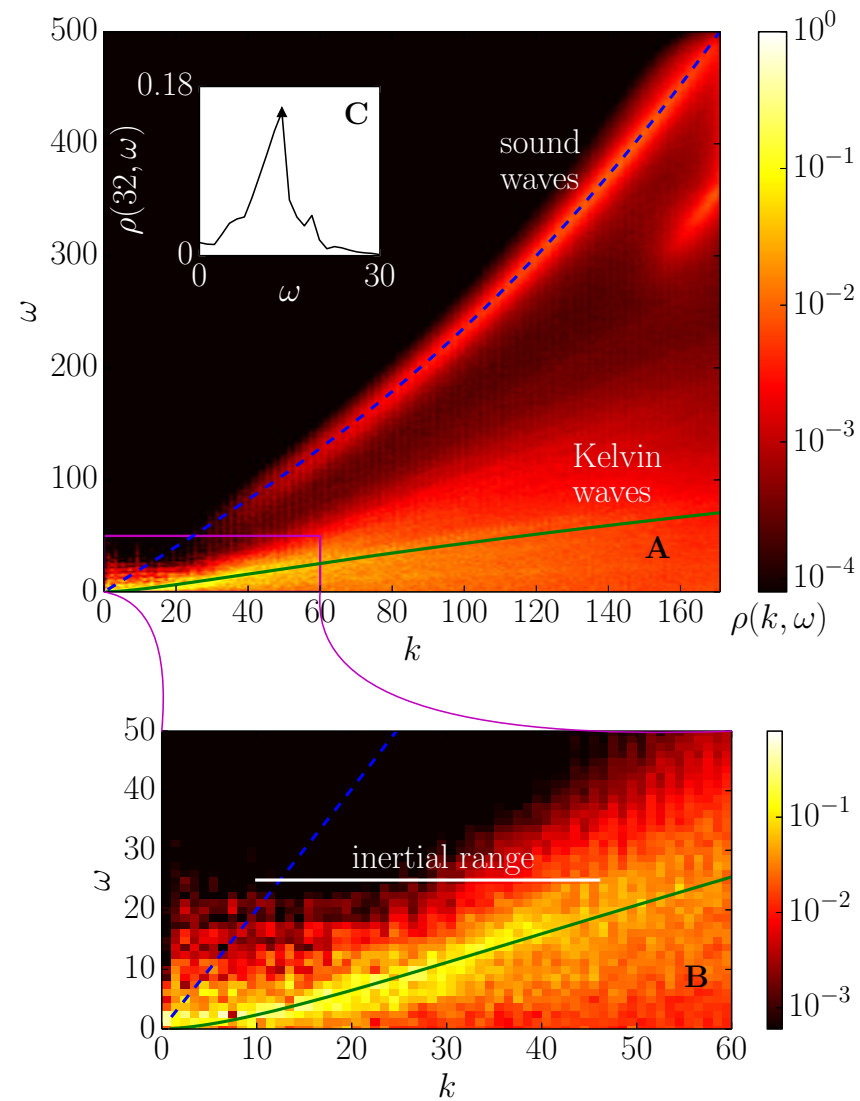
L : box size, l : mean intervortex scale, a : vortex radius

Kelvin waves



Vortex lines have tension and Kelvin waves can travel through them.
Below the intervortex scale we can have Kelvin wave turbulence.
Kelvin waves are generated by reconnection events

Superfluid turbulence (Gross-Pitaevskii equation)



[PC, P. Mininni & M. Brachet, PRA (2015)]

Helicity in quantum flows

► $H = \int \mathbf{u} \cdot (\nabla \times \mathbf{u}) dV$

Helicity in quantum flows

- ▶ $H = \int \mathbf{u} \cdot (\nabla \times \mathbf{u}) dV$
- ▶ It is a measure of the knottedness of field lines and it can be interpreted topologically [*Moffat, JFM (1968)*]

Helicity in quantum flows

- ▶ $H = \int \mathbf{u} \cdot (\nabla \times \mathbf{u}) dV$
- ▶ It is a measure of the knottedness of field lines and it can be interpreted topologically [*Moffat, JFM (1968)*]
- ▶ In ideal fluids, it is a conserved quantity

Helicity in quantum flows

- ▶ $H = \int \mathbf{u} \cdot (\nabla \times \mathbf{u}) dV$
- ▶ It is a measure of the knottedness of field lines and it can be interpreted topologically [*Moffat, JFM (1968)*]
- ▶ In ideal fluids, it is a conserved quantity
- ▶ Important in wide range of applications, from storm generation to DNA biology

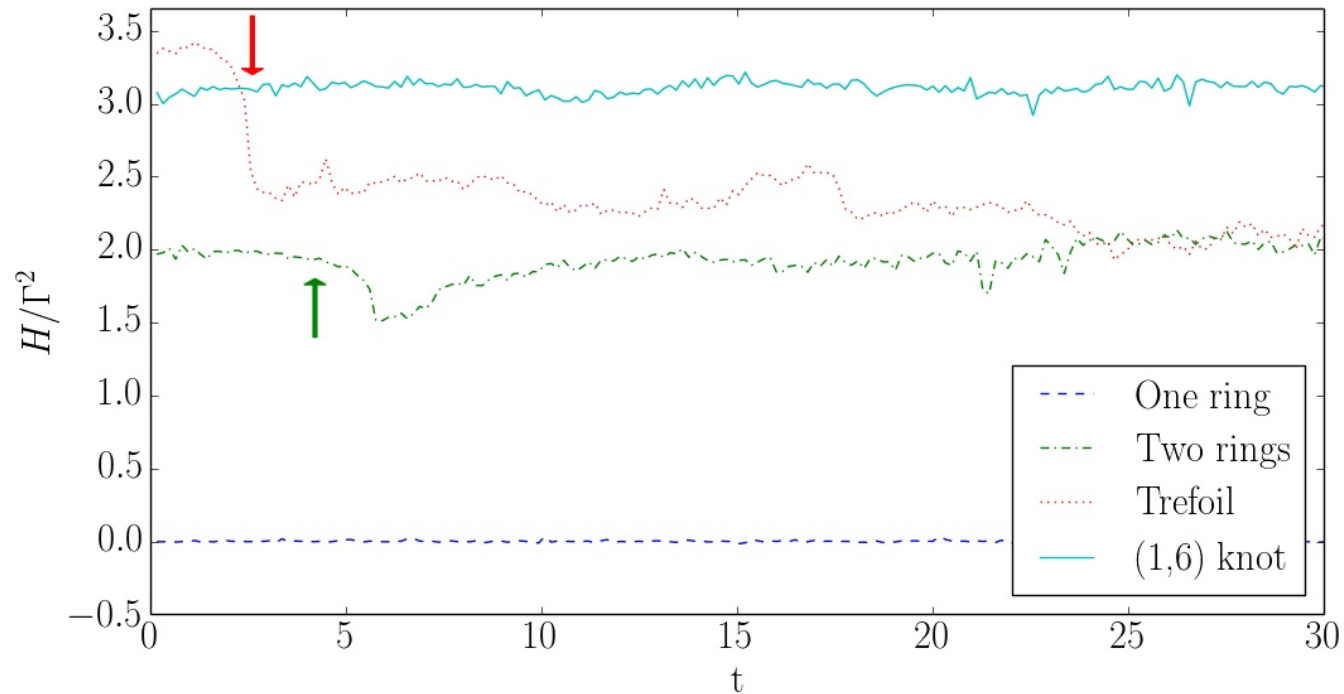
Helicity in quantum flows

- ▶ $H = \int \mathbf{u} \cdot (\nabla \times \mathbf{u}) dV$
- ▶ It is a measure of the knottedness of field lines and it can be interpreted topologically [*Moffat, JFM (1968)*]
- ▶ In ideal fluids, it is a conserved quantity
- ▶ Important in wide range of applications, from storm generation to DNA biology
- ▶ Calculating helicity is not trivial, as velocity and vorticity are both singular fields.

Helicity in quantum flows

- ▶ $H = \int \mathbf{u} \cdot (\nabla \times \mathbf{u}) dV$
- ▶ It is a measure of the knottedness of field lines and it can be interpreted topologically [*Moffat, JFM (1968)*]
- ▶ In ideal fluids, it is a conserved quantity
- ▶ Important in wide range of applications, from storm generation to DNA biology
- ▶ Calculating helicity is not trivial, as velocity and vorticity are both singular fields.
- ▶ Some authors have calculated helicity with topological tools, others have filtered the fields, we have regularized them!

Helicity dynamics for rings and knots

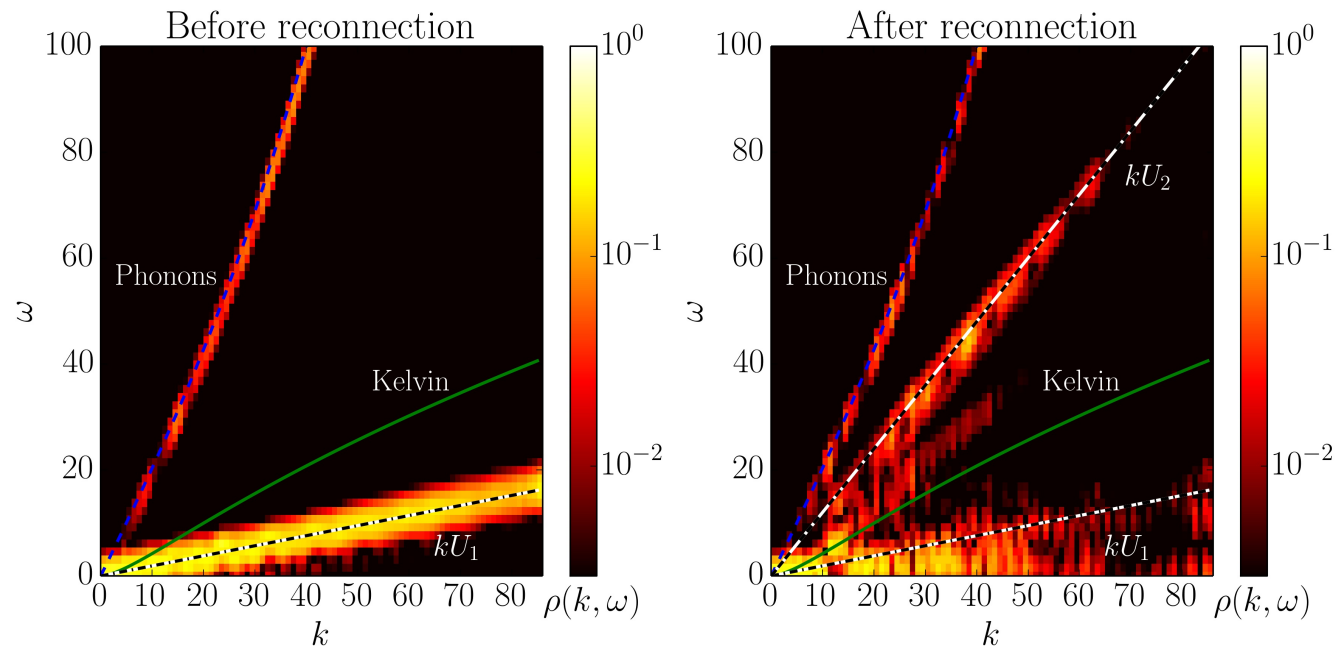
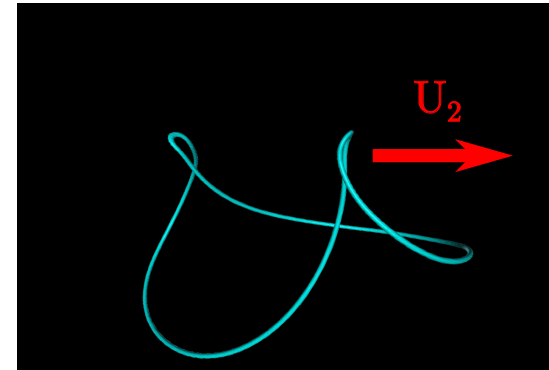
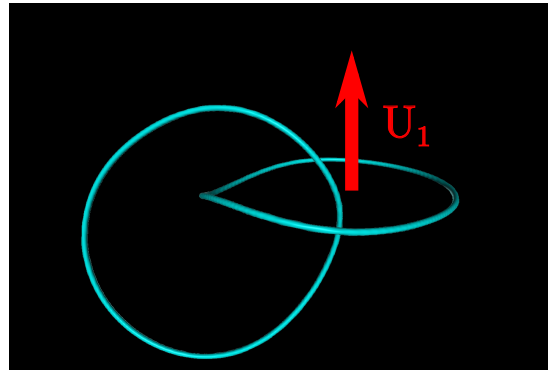


- ▶ Initial values of regularized helicity match other methods
- ▶ One ring and knot: No reconnection, helicity is conserved
- ▶ Two rings: reconnection but helicity also conserved
- ▶ Trefoil: reconnection, helicity is not conserved

[*PC, P. Mininni & M. Brachet, submitted to PRL (2016)*]

Two rings evolution

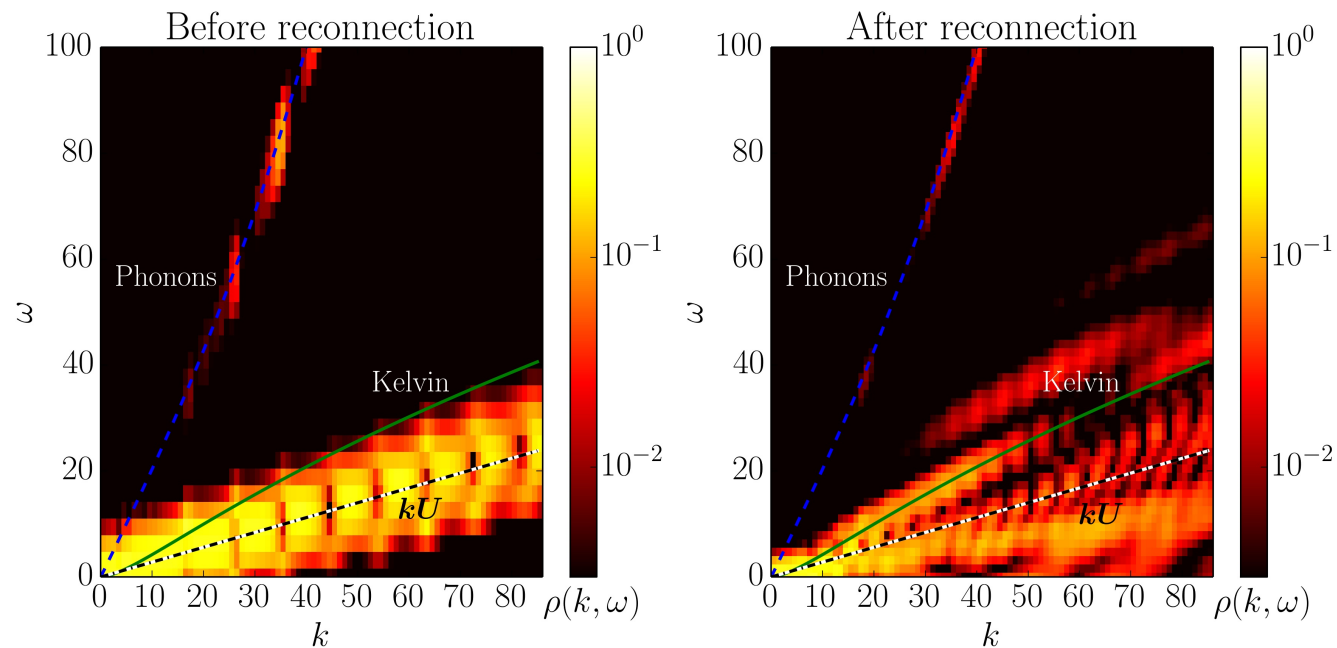
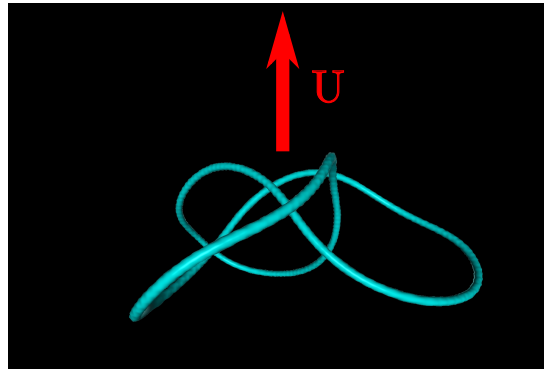
Before and after reconnection



Lines get to align before reconnection so helicity is conserved

Trefoil evolution

Before and after reconnection

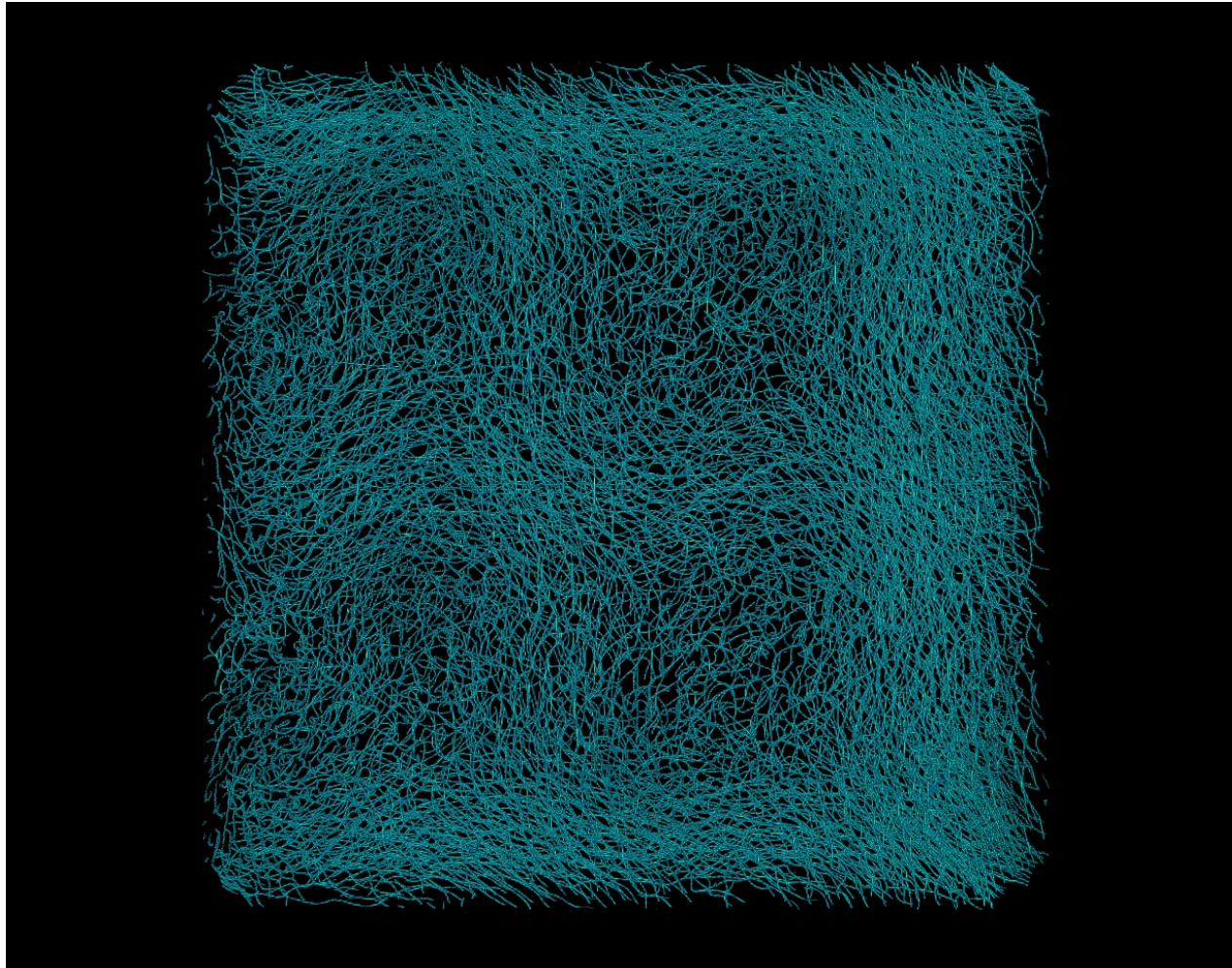


Lines don't align perfectly, helicity is not conserved and Kelvin waves are generated

Helicity beyond simple knots

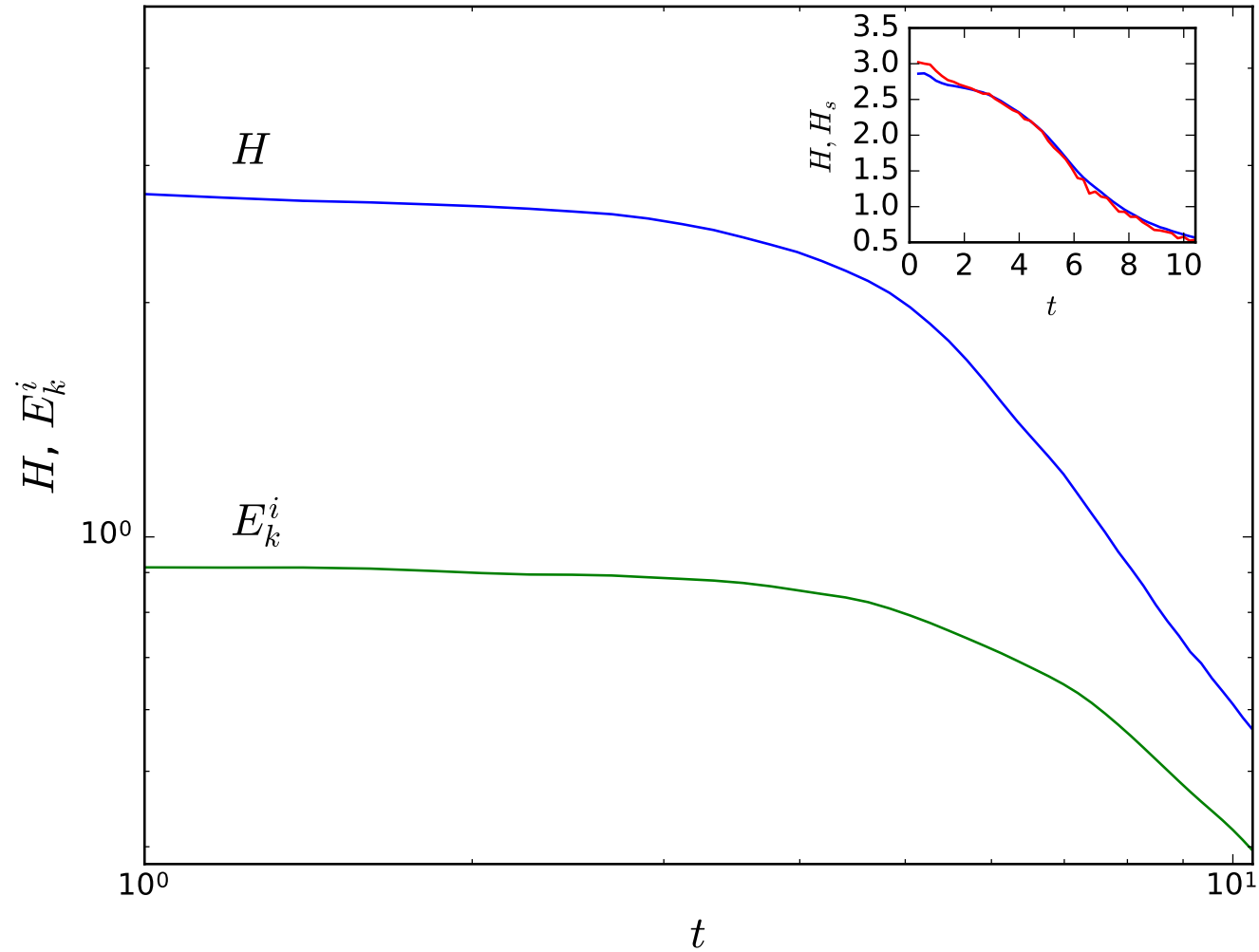
ABC flow

With the regularized helicity we can study complex flows

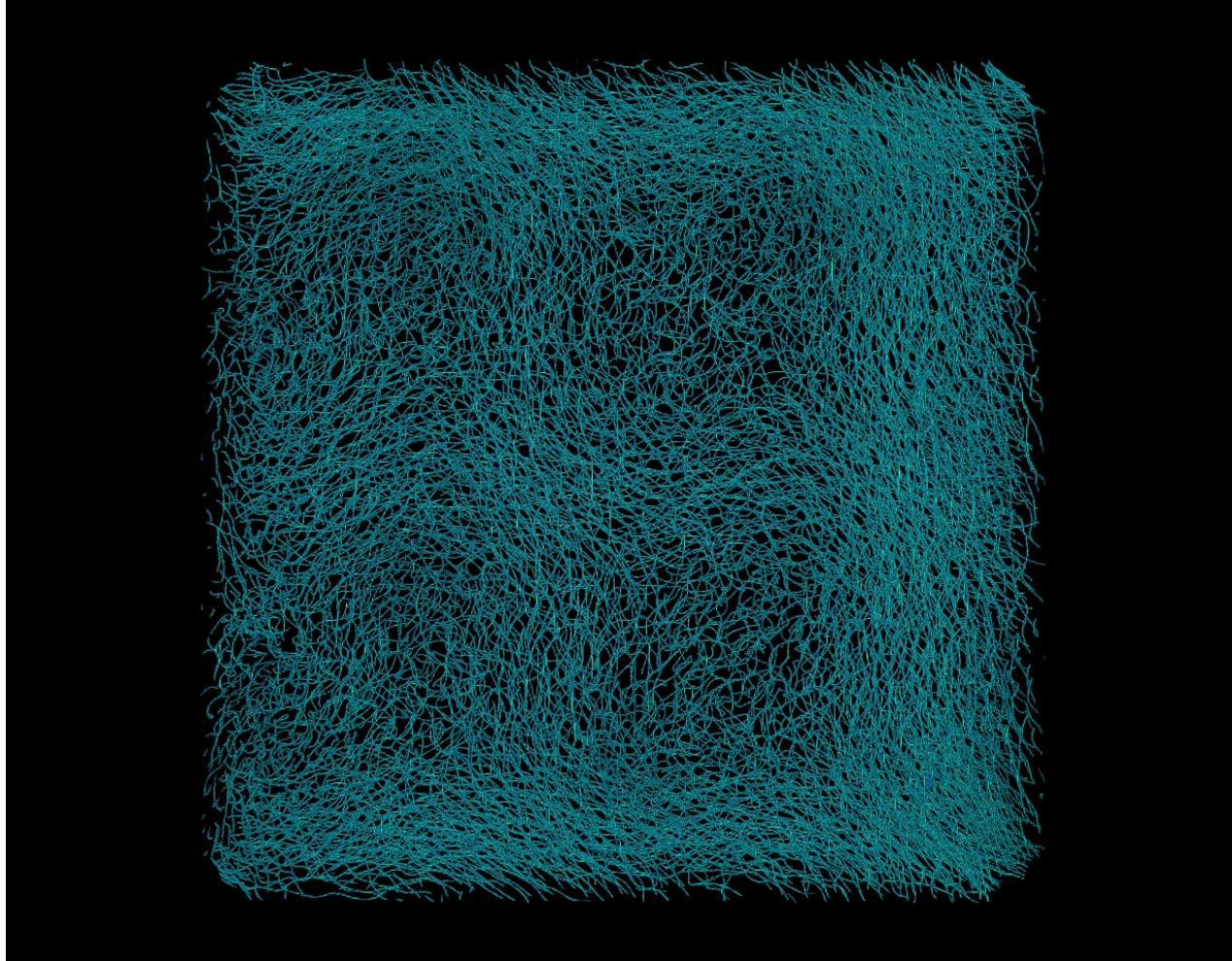


2048^3 simulation, $H \approx 480000\Gamma^2$

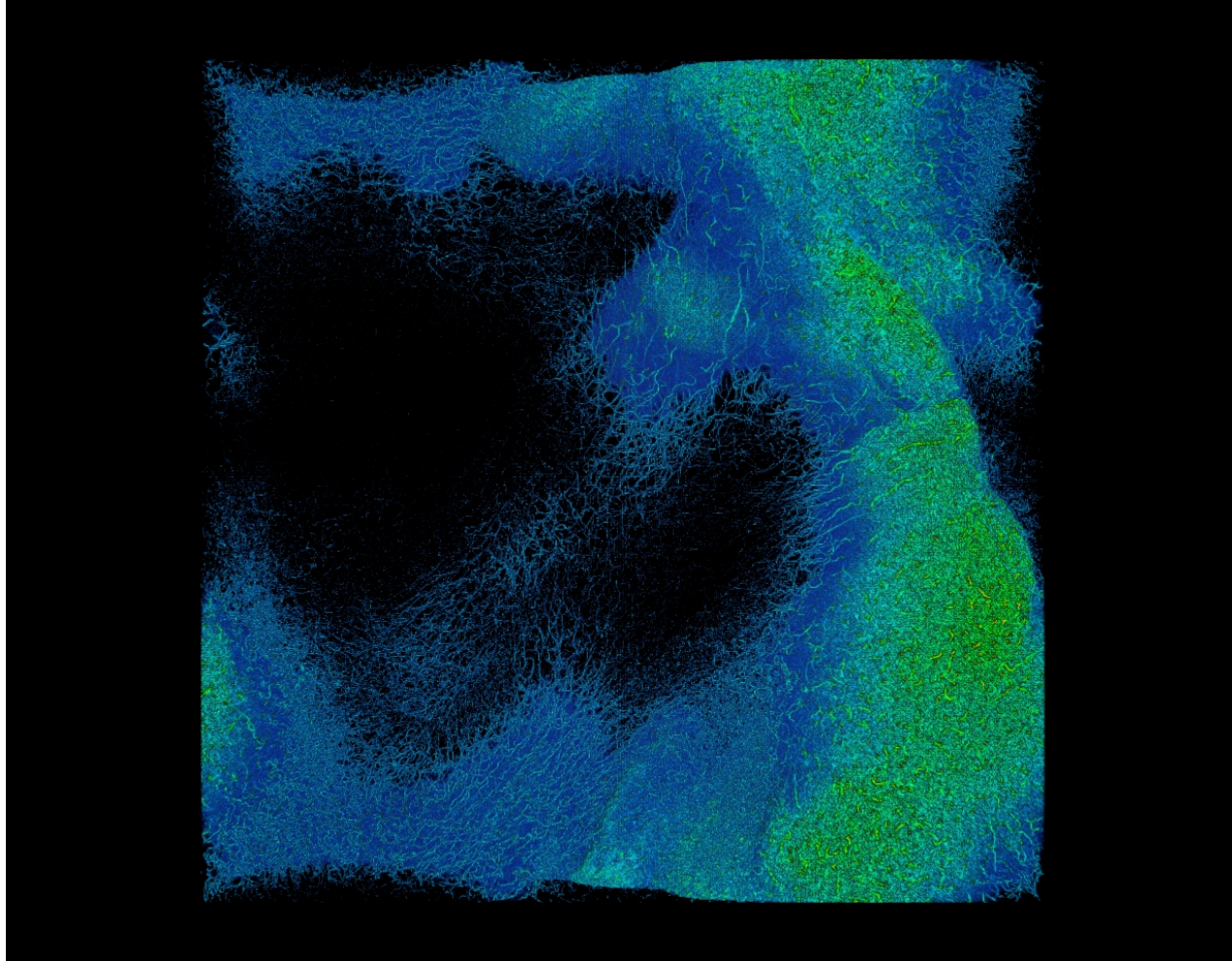
Evolution of helicity in ABC flow



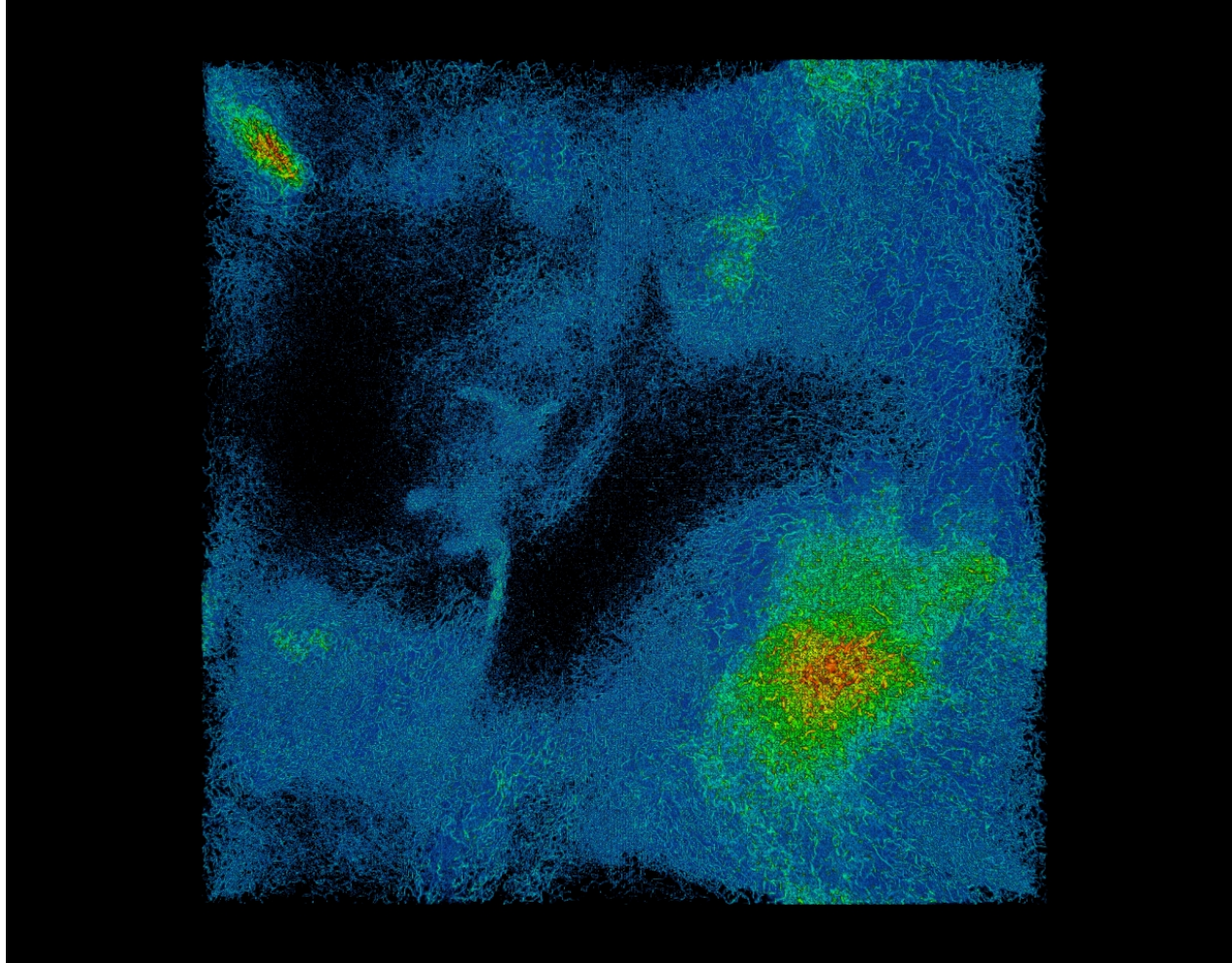
Effects of helicity in the flow



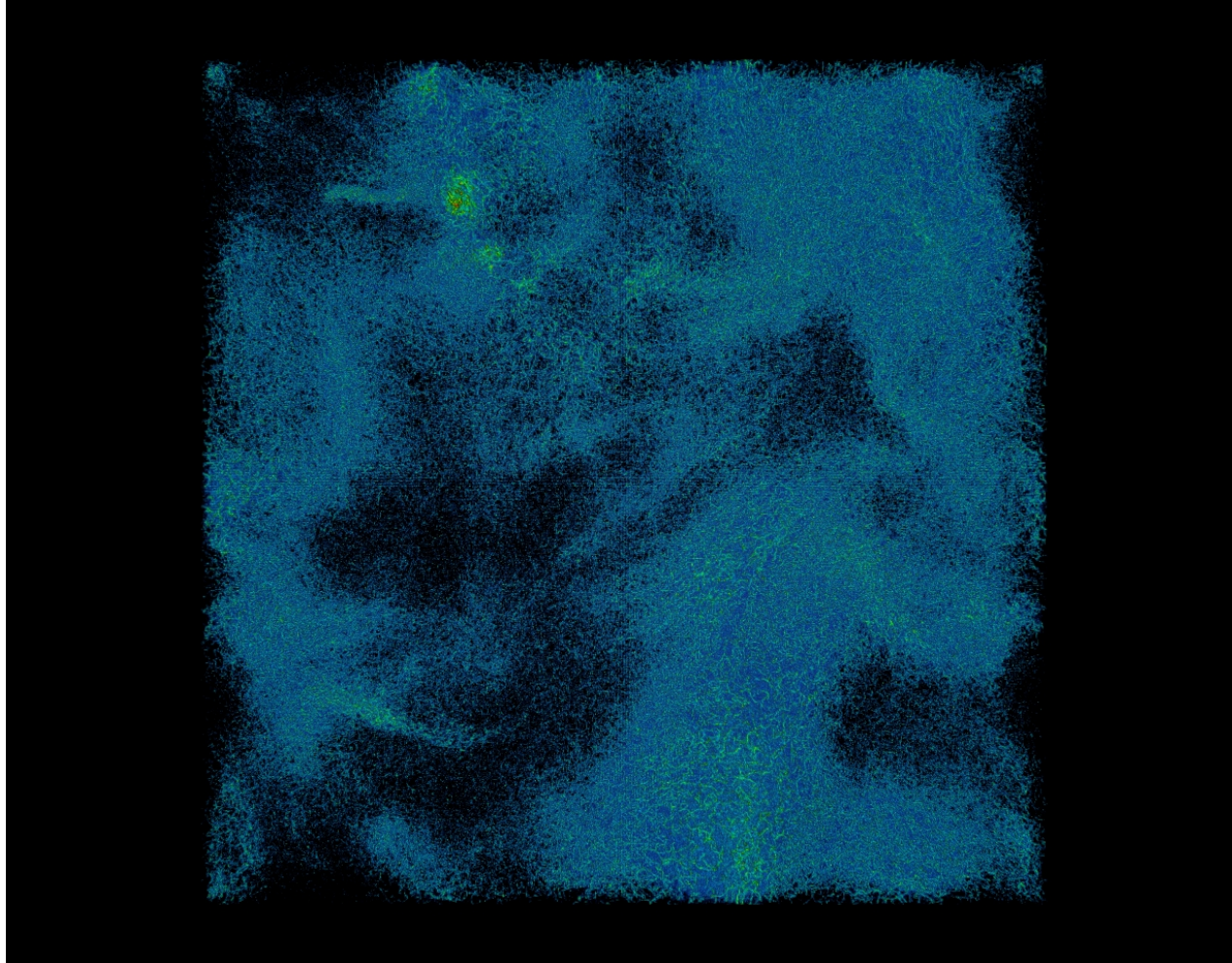
Effects of helicity in the flow



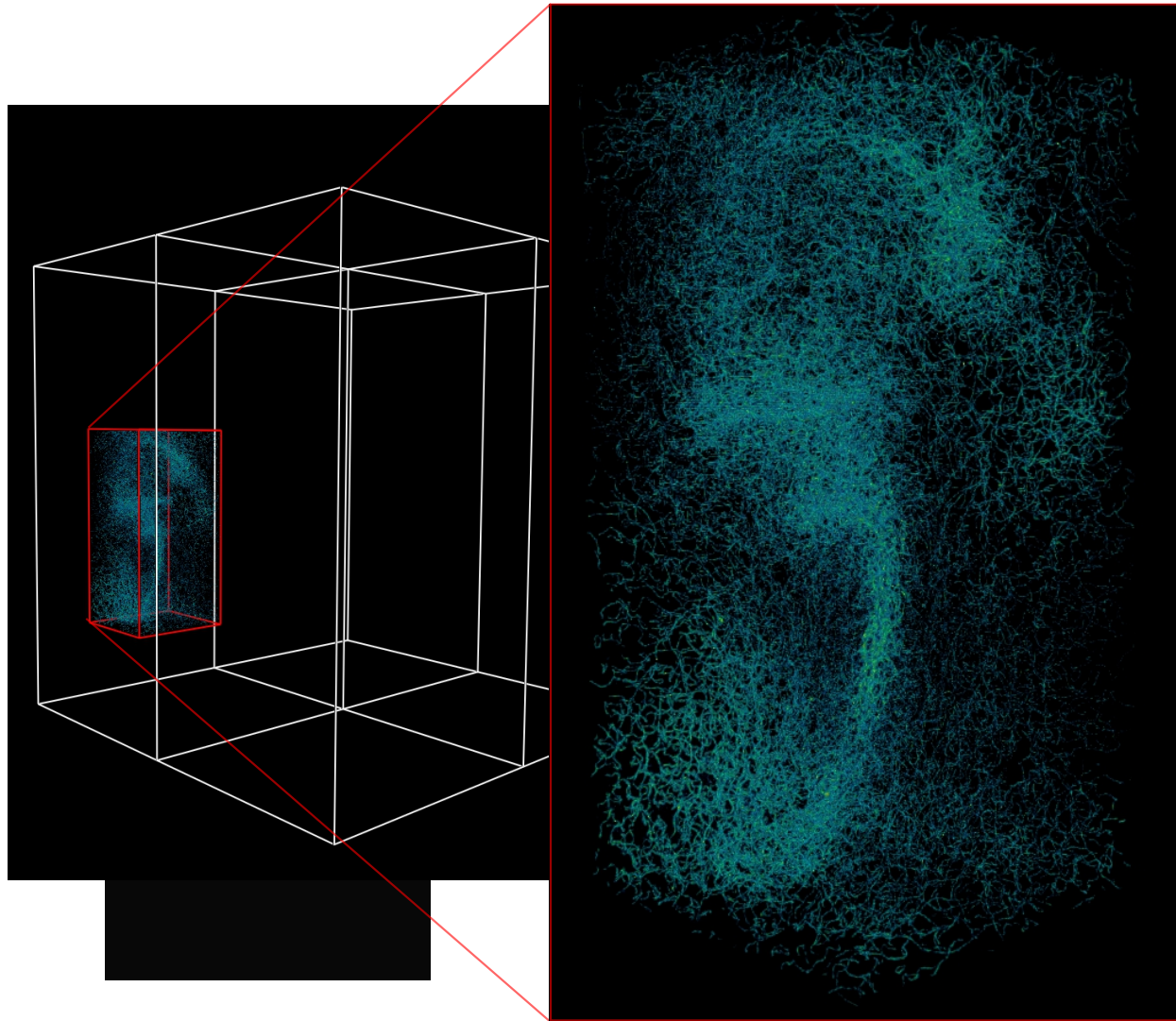
Effects of helicity in the flow



Effects of helicity in the flow



Quantum tornadoes



Work in progress!

Thanks!